

SÃO TOMÉ AND PRÍNCIPE 2040
INVESTMENT FORUM

RISE Resilience
Investment
Sustainability
& Equity
ISTP



GOVERNO
SÃO TOMÉ E PRÍNCIPE

Water Supply Project for the City of São Tomé

Water Supply Opportunity

- Complete modernization of the system
- Reduction of losses
- Improvement of service and increase in coverage
- Increased reliability and resilience
- Preparation to serve 230,000 inhabitants in 2050



Water Supply The project

The main objective of the project is to ensure a **safe, continuous, and resilient water supply** for the city of São Tomé and surrounding areas. By modernizing the infrastructure for water collection, treatment, conveyance, storage, and distribution, the project will significantly improve the reliability of the system and increase available capacity, ensuring water supply for around 230,000 people by 2050.



Water Supply
 Expected impact

Among the expected results, the following stand out:

- Reduction of actual and apparent losses
- Overall improvement of hydraulic performance
- Enhanced climate resilience
- Creation of more stable and safer conditions for public health through a more regular, efficient, and higher quality service



Water Supply
 Maturity level

The project demonstrates a high level of technical maturity, with several stages already completed.

Completed work:

- Initial report
- Diagnosis of subsystems
- Topographic surveys
- Designs for the Rio do Ouro subsystem and interconnections
- Preliminary study of the distribution network
- Complete environmental and social studies
- Complementary studies
- Contracted technical supervision and active technical assistance





Water Supply Governance structure

Entity/Partner	Role in the Project
Government of STP	Borrower of the financing and institutional framework
DAAC – Direção Geral do Ambiente	Licensing authority responsible for monitoring compliance with environmental and social measures
EMAE	Project implementation and future operation of infrastructure
UGP – Unidade de Gestão do Projeto	Technical, administrative, and financial coordination; institutional coordination and compliance with environmental and social obligations
Aqualogos / Hydroconseil	Technical assistance to the UGP (5 years)
Quadrante / ProceSl / MF&A / Fase	Development of implementation projects, environmental studies, and supervision of construction works
Community structures (PGAS)	Support for communication with communities and the functioning of complaint mechanisms
Partners	National: Government, EMAE International: EIB, EU, technical consortia



Water Supply

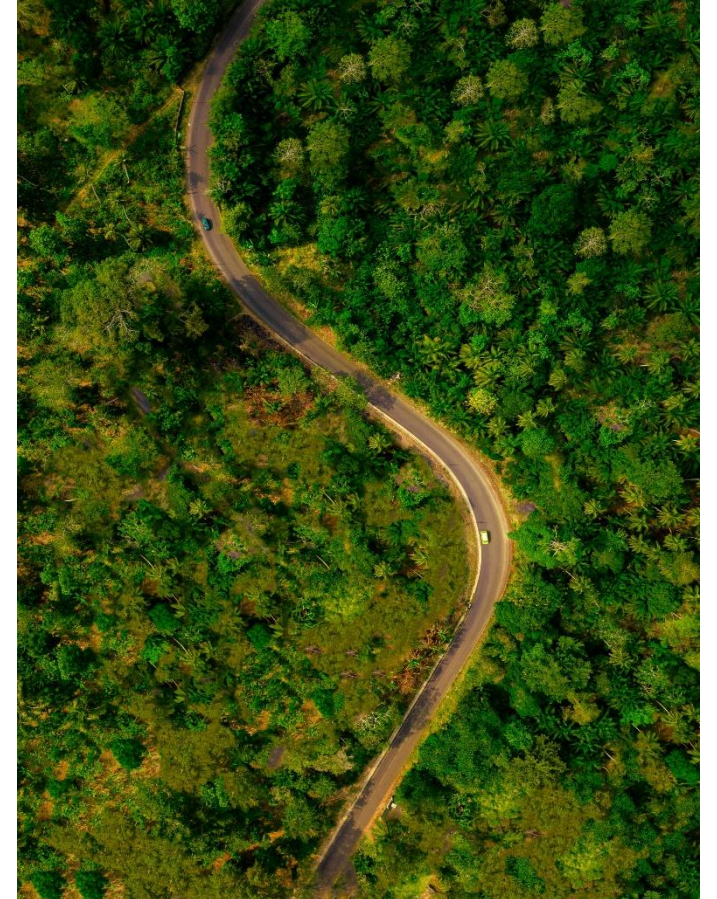
Key conditions


What we are looking for

- Co-financing for CAPEX (€54.2 million)
- Concessionary financing / grants / blended finance

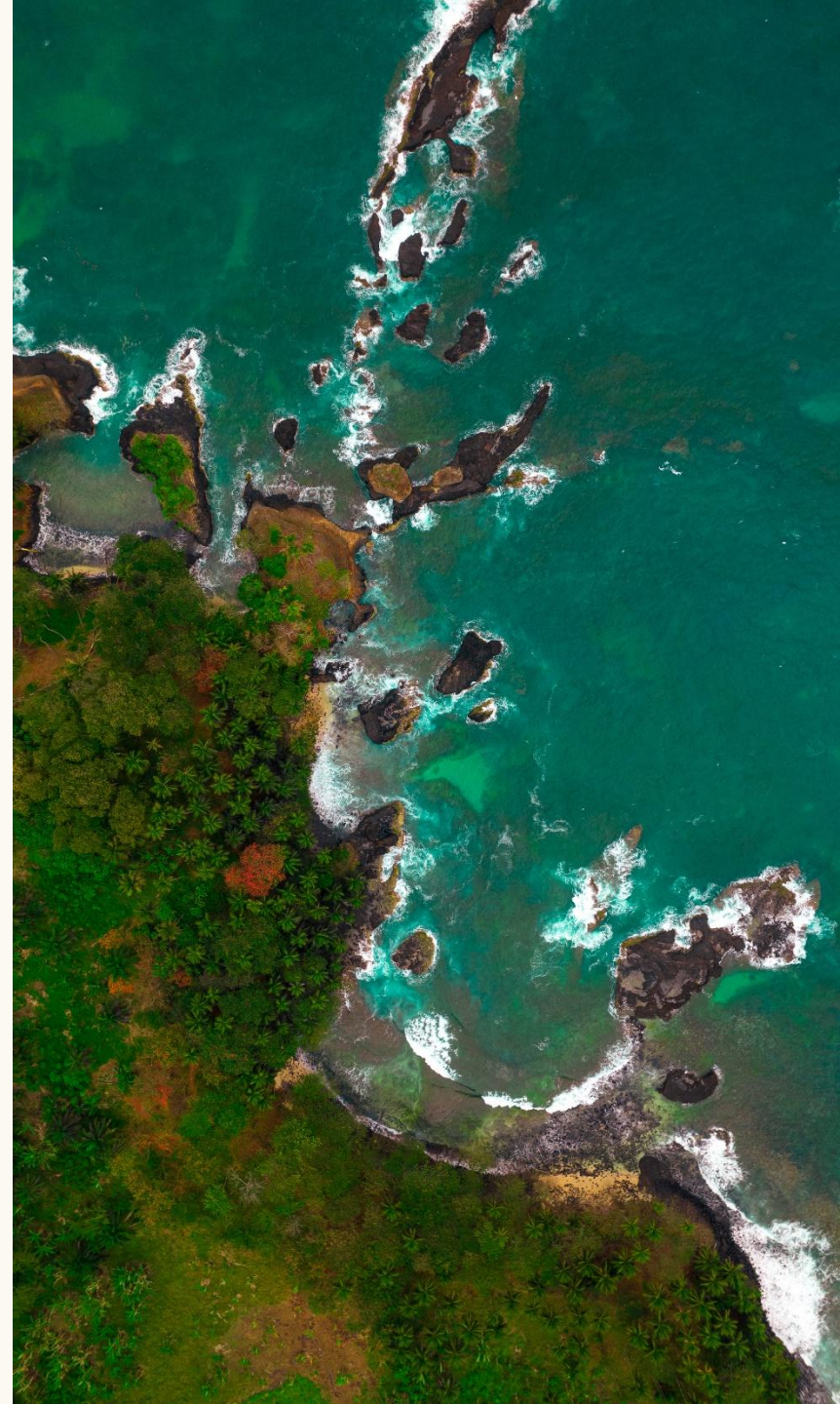
Incentives

- Financing secured by the EIB and the EU €15 million for technical preparation (studies, implementation plans, environmental studies, technical assistance, and supervision)
- Solid institutional framework
- High level of technical maturity





The **São Tomé and Surrounding Areas Drinking Water Supply Project** represents a crucial investment of €54.2 million to modernize and expand the water system in the capital and the neighboring districts of Mé-Zóchi and Lobata. The project includes the expansion of the treatment plant, new reservoirs, reinforcement of the water supply pipes, distribution networks, and thousands of household connections. This is a structural operation that transforms the country's high water potential into well-being, economic development, and climate resilience.



SÃO TOMÉ AND PRÍNCIPE 2040
INVESTMENT FORUM

RISE
ISTP

Resilience
Investment
Sustainability
& Equity

EMAE and the Government are
available for technical dialogue
and partnership building.



GOVERNO

CO-ORGANIZED WITH
THE UN, PORTUGAL and AfDB