

SÃO TOMÉ AND PRÍNCIPE 2040  
INVESTMENT FORUM

**RISE** Resilience  
Investment  
Sustainability  
& Equity  
**ISTP**



GOVERNO  
SÃO TOMÉ E PRÍNCIPE

# Fernão Dias Multipurpose Port

Fishing and  
Logistics Terminal  
Opportunity

Although it has a vast and rich EEZ, the country faces challenges: an obsolete fleet, high waste, inadequate landing conditions, and a lack of certified infrastructure. Fishing is fundamental to the national diet and accounts for 70% of the animal protein consumed. Fernão Dias is a strategic fishing zone in the north of the island, close to the most productive fishing areas.



Fishing and  
 Logistics Terminal  
 The project

The **Fernão Dias Artisanal Fish Reception and Logistics Station project** (Fishing and Logistics Terminal – Phase I) aims to modernize the fishing value chain in São Tomé and Príncipe by creating a small/medium-sized infrastructure for the reception, conservation, and logistics of artisanal and semi-industrial fish. It contributes to the implementation of the STP 2040 Vision, strengthening food security, fishermen's income, and boosting the coastal economy.



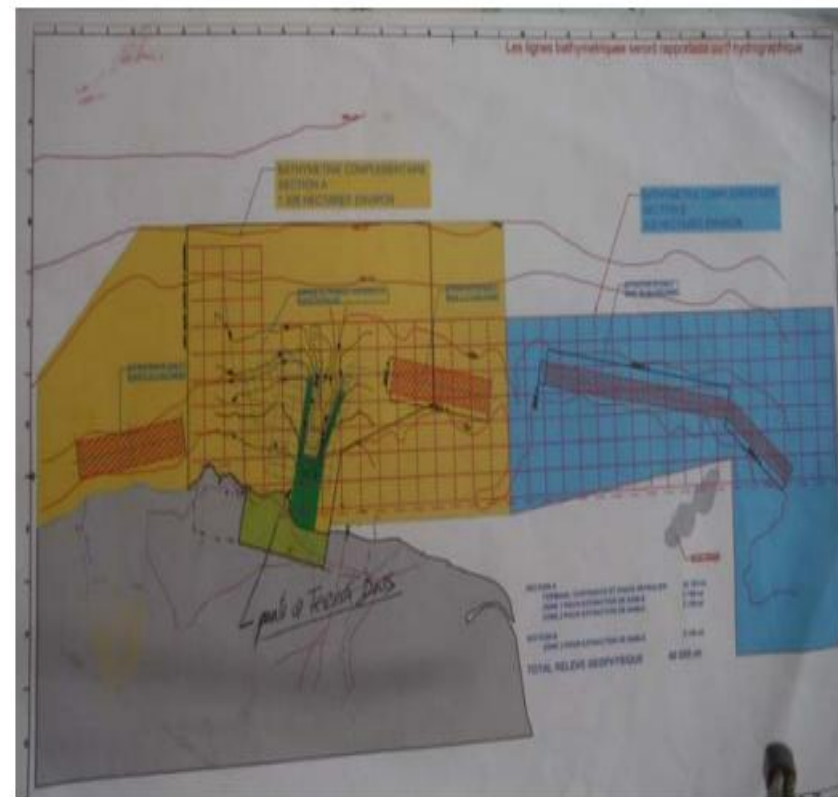
Fishing and  
Logistics Terminal  
Expected impact

- Initial investment: USD 450,000 (Phase I)
- Expected results:
  - Increased production: 20–25%
  - Reduced losses: 30%
  - 150 direct jobs and 500 indirect jobs
  - Improved food security
  - Strengthened local value chains



Fishing and  
 Logistics Terminal  
 Maturity level

- In technical preparation with the African Development Bank (AfDB)
- Preliminary studies completed
- Part of the INTEGRATED NATIONAL ENERGY AND WATER PROGRAM (PNIEA) and National Sustainable Development Strategy (ENDS)



## Fishing and Logistics Terminal Promoters and funders

### Key stakeholders

- Government: Ministry of Infrastructure, Natural Resources, and Environment (MIRNA) / Blue Economy
- African Development Bank (AfDB)
- Food and Agriculture Organization of the United Nations (FAO)
- Trade and Investment Promotion Agency (APCI)
- Local cooperatives, municipality, and private sector (PPP)

### Funders

- Government
- AfDB (BLUE ECONOMY FLAGSHIP INVESTMENT REFORMS & MOBILIZATION PROGRAMME grants)
- FAO and Global Environment Facility (GEF)
- European Union (EU) and Community of Portuguese-speaking Countries (CPLP)
- Private sector

## Fishing and Logistics Terminal

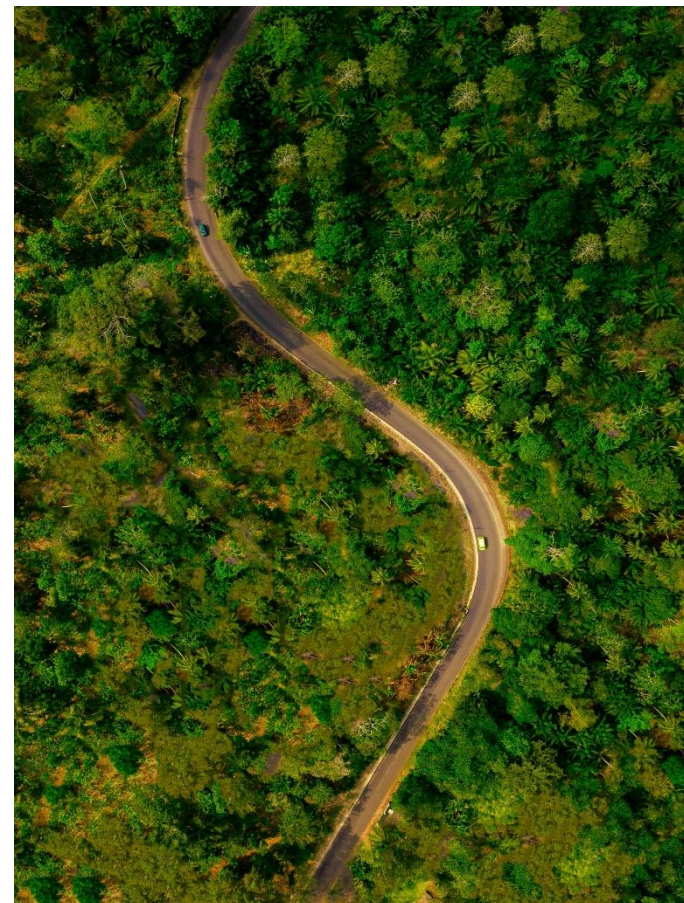
### Key conditions

### What is sought

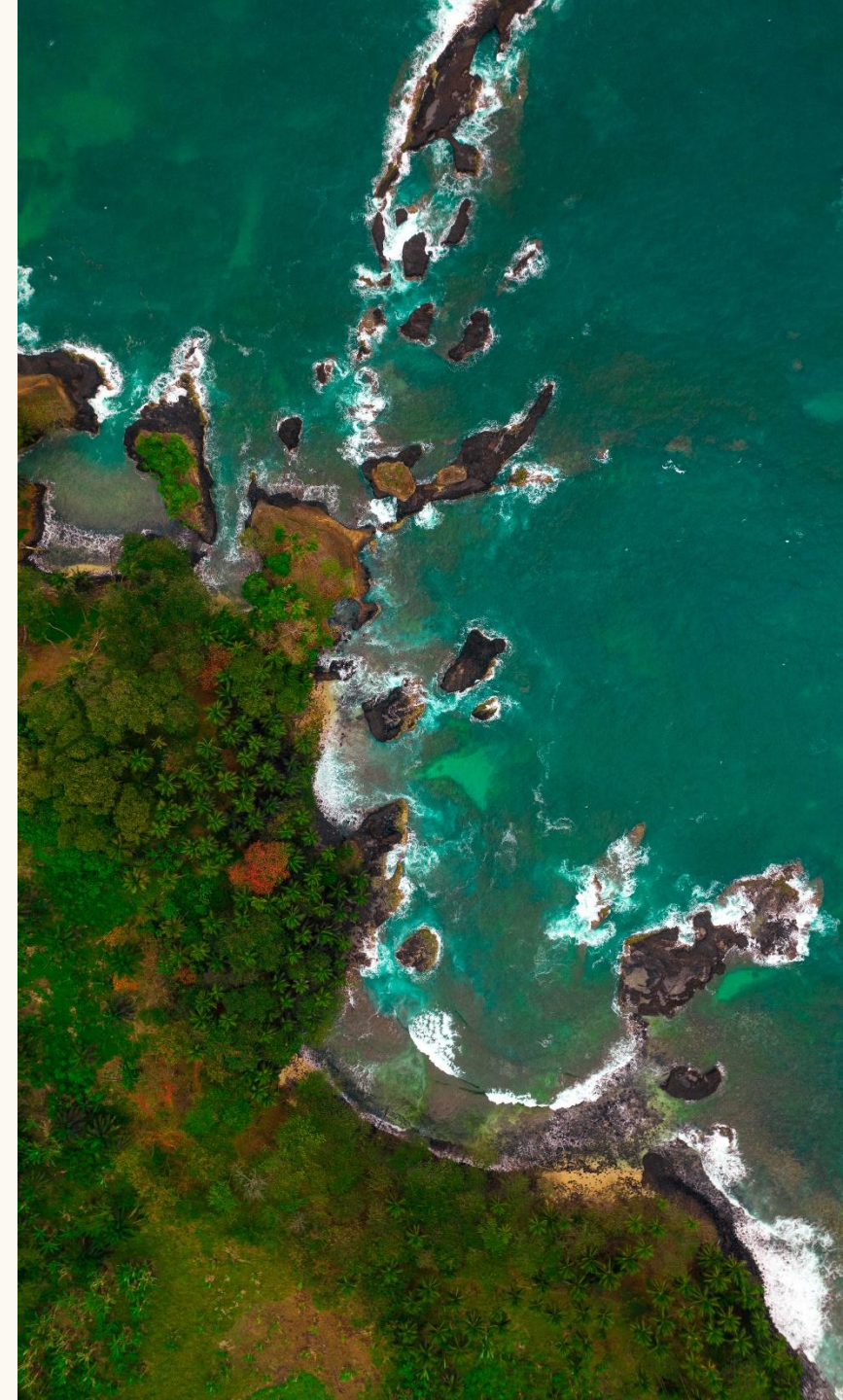
- Operating PPPs
- Community joint ventures
- Blended finance
- Concessions

### Incentives:

Tax, customs, technical, access to concessional lines, and a strong institutional framework



The **Fernão Dias Fishing and Logistics Terminal – Phase I** marks the beginning of a profound transformation in the artisanal fish value chain in São Tomé and Príncipe. The first phase, with an initial investment of USD 450,000, establishes a Reception Station and a modern Cold Chain designed to reduce post-harvest losses, improve quality and hygiene in fish handling, and ensure its preservation until transport and marketing. This infrastructure directly responds to the needs of the artisanal sector, offering conditions compatible with international standards and contributing to strengthening national food security.



SÃO TOMÉ AND PRÍNCIPE 2040  
INVESTMENT FORUM

**RISE**  
**ISTP**

Resilience  
Investment  
Sustainability  
& Equity



CO-ORGANIZED WITH  
THE UN, PORTUGAL and AfDB

## Contactos

Silvestre Duarte

T: +239 991 2552

E-mail: [sylvegomes@yahoo.com.br](mailto:sylvegomes@yahoo.com.br)